

Photometric Measurement Report

Generated by Radiant Vision Systems Light Measurement Platform

Luminaire Model	L SU2811002				
Led & Driver Type	SAMSUNG	5630	&	TRIDONIC	-
Luminaire Type	SURFACE MOUNTED				
Luminaire Family	MARKT				
Holder	-				
Reflector / Lens Degree	135				
Brand	LAMP 83				
Date of issue	24.09.2018				

Test Standards

EN 13032-1:2012 and EN 13032-4:2013 Light and Lighting. Measurement and presentation of photometric data of lamps and luminaires

IESNA LM-79-08 Approved Method: Electrical and Photometric Measurements of SSL Products(Type-C)

Test and Test Method

The photometric measurements listed in this report are performed by a Radiant Vision Systems PM-NFMS™ near field goniometer system. The NFMS system performs brightness and color measurements as a function of viewing angle. It provides accurate near-field luminance distribution data and generates far field distribution data.

Test Equipment

Name	Serial / Version
The PM-NFMS™ system consists of a PM-Series™ Imaging Colorimeter IC-PMI2	SN# 79046501
NFMS 800 two-axis goniometer	SN# 641502001
SP-1000 spectrometer	SN# 3017942276
PM-NFMS™ software	Version 4.9.9
ProSource™ Software	Version 10.2.2

The measurement data is preserved as a set of images Radiant Source Model™(RSMX). The ProSource™ Software (Version 10.2.2) was been used to convert the RSMX to a ray set(LTD file)

Laboratory Environment and Conditions

The measurement was done in the photometric laboratory of Lamp83 (Istanbul). It is a climate controlled dark room. Also a AC/DC power stabilisation unit is used(Pyramid Plus PPS310,8KW,10kVA,SN# 073010T0066).

Temperature:	25°C	(± 1 °C)
Moisture:	60%	(± 10 %)

The luminaire was thermally stabilized for **at least 45 minutes** on the goniometer. The end of the stabilization period has been reached if in the last 10 minutes the luminance output has not changed by more than $\pm 0.5\%$.

Equipment Specifications

Precision: 0.25° (NFMS Goniometer)

Luminance (Y): $\pm 3\%$ (Imaging Colotimeter IC-PMI2)

Color Accuracy: ± 0.002 Illuminant A type sourc (Spectrometer SP-1000)

Tested By:

Gökhan AKSEL
Test Technician

Reviewed By:

Anıl TOKER
Physics Engineer

Approved By:

Erdoğan EMREM
R&D Manager

LAMP83 Aydınlatma San. Ve Tic. A.S

Dudullu Organize Sanayi Bölgesi 2. Cadde No:22 PK: 34775 Ümraniye - İstanbul

Photometric Measurement Report

Generated by Radiant Vision Systems Light Measurement Platform

Luminaire Spectroradiometric
Results

Luminous Flux (lm)	3981
CCT (K)	3,070
Cx	0.4328
Cy	0.4038
CRI	85
Luminous Efficacy (lm/W)	97.696
Angle (°)	136.0

Luminaire Electric Specifications

Voltage (VAC)	221.1
Current (A)	0.19
Power (W)	40.74873
Power Factor	0.97
LED Voltage(VDC)	99.3
LED Current(mA)	358
LED Power(W)	35.5494

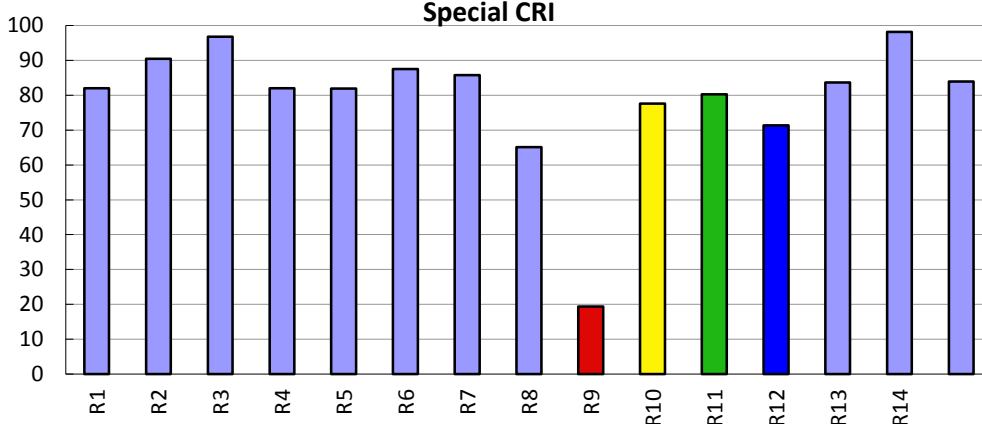
Measurement Preset
Specifications

External ND Filter	NO
ND Filter	ND2
F-Number	8
Exposure Time (ms)	90.5
Distance(mm)	3135

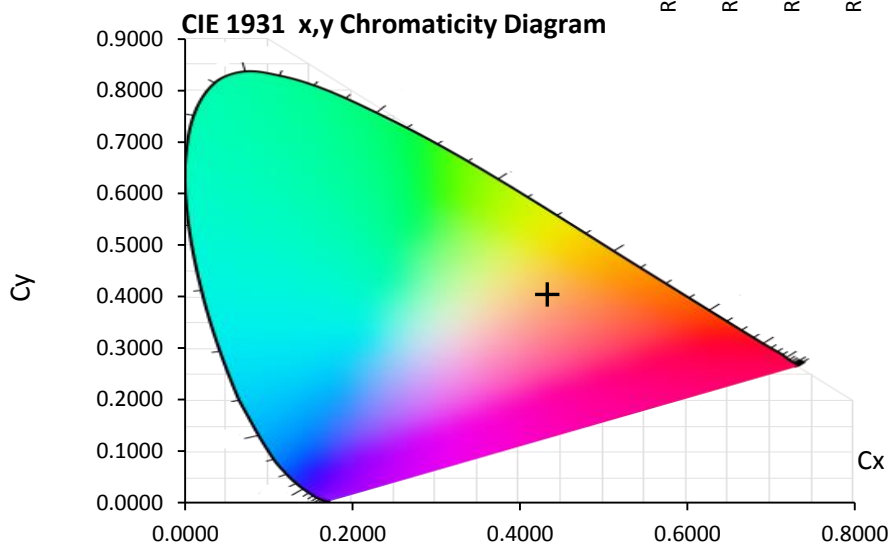
Rendering Index

CRI	
R1	82.0
R2	90.4
R3	96.8
R4	82.0
R5	81.9
R6	87.5
R7	85.8
R8	65.2
R9	19.3
R10	77.6
R11	80.3
R12	71.4
R13	83.7
R14	98.2
CRI Ra	84.0

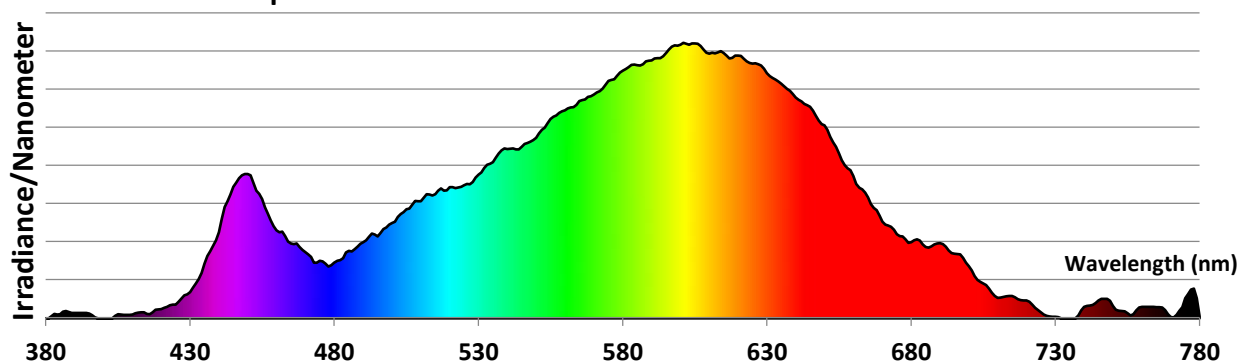
Special CRI



CIE 1931 x,y Chromaticity Diagram



Relative Spectral Power Distribution

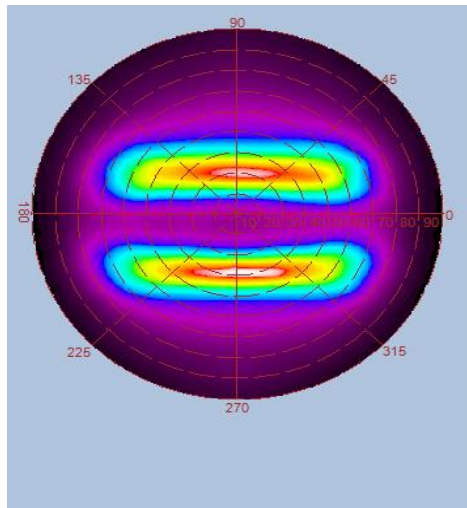


Photometric Measurement Report

Generated by Radiant Vision Systems Light Measurement Platform

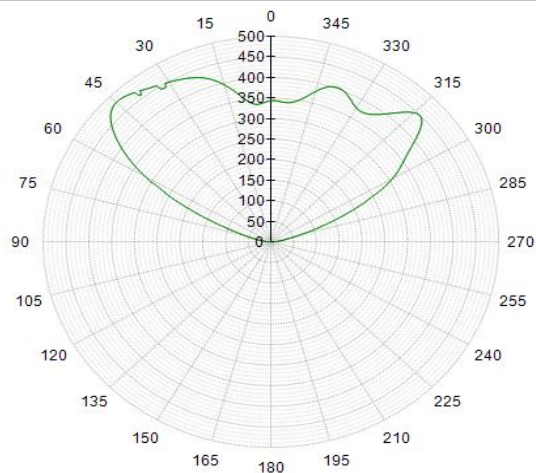
Intensity Distribution - Polar Curve

Intensity Radar Plot (ray trace to infinity)



Luminous Intensity (Candela)

Luminous Intensity Distribution



Cone Diagram

0.5	2.16 0.79	E(0°) E(C90) E(C0)	1376 65.2° 38.2°	66 2619
1.0	4.33 1.57	E(0°) E(C90) E(C0)	344 65.2° 38.2°	17 655
1.5	6.49 2.36	E(0°) E(C90) E(C0)	153 65.2° 38.2°	7 291
2.0	8.66 3.15	E(0°) E(C90) E(C0)	86 65.2° 38.2°	4 164
2.5	10.82 3.93	E(0°) E(C90) E(C0)	55 65.2° 38.2°	3 105
3.0	12.99 4.72	E(0°) E(C90) E(C0)	38 65.2° 38.2°	2 73

Distance [m] Cone Diameter [m]

— C0 - C180 (Half value angle: 76.4°)

— C90 - C270 (Half value angle: 130.4°)

Illuminance [lx]

Photometric Measurement Report

Generated by Radiant Vision Systems Light Measurement Platform

UGR Table**Glare Evaluation According to UGR**

ρ Ceiling		70	70	50	50	30	70	70	50	50	30
ρ Walls		50	30	50	30	30	50	30	50	30	30
ρ Floor		20	20	20	20	20	20	20	20	20	20
Room size X Y		Viewing direction at right angles to lamp axis					Viewing direction parallel to lamp axis				
2H	2H	21.7	23.0	22.0	23.2	23.5	25.0	26.3	25.3	26.5	26.8
	3H	21.8	23.0	22.1	23.2	23.5	25.6	26.7	25.9	27.0	27.3
	4H	21.8	22.9	22.2	23.2	23.5	25.6	26.7	25.9	27.0	27.3
	6H	21.9	22.9	22.3	23.2	23.5	25.6	26.6	25.9	26.9	27.2
	8H	21.9	22.9	22.3	23.2	23.5	25.5	26.5	25.9	26.8	27.1
	12H	22.0	22.9	22.3	23.2	23.5	25.5	26.4	25.9	26.7	27.1
4H	2H	22.8	23.9	23.1	24.2	24.5	25.3	26.4	25.6	26.7	27.0
	3H	22.9	23.8	23.3	24.1	24.5	26.1	27.1	26.5	27.4	27.7
	4H	23.0	23.8	23.4	24.1	24.5	26.3	27.1	26.7	27.4	27.8
	6H	23.0	23.7	23.5	24.1	24.5	26.3	27.0	26.7	27.3	27.7
	8H	23.1	23.7	23.5	24.1	24.5	26.2	26.9	26.7	27.3	27.7
	12H	23.1	23.7	23.6	24.1	24.5	26.2	26.8	26.7	27.2	27.6
8H	4H	23.1	23.7	23.5	24.1	24.5	26.2	26.8	26.6	27.2	27.6
	6H	23.2	23.7	23.7	24.1	24.6	26.2	26.8	26.7	27.2	27.6
	8H	23.3	23.7	23.7	24.2	24.6	26.2	26.7	26.7	27.1	27.6
	12H	23.3	23.7	23.8	24.2	24.7	26.2	26.6	26.7	27.1	27.6
12H	4H	23.1	23.7	23.5	24.1	24.5	26.2	26.8	26.6	27.2	27.6
	6H	23.2	23.6	23.7	24.1	24.6	26.2	26.7	26.7	27.1	27.6
	8H	23.2	23.6	23.7	24.1	24.6	26.2	26.6	26.7	27.1	27.6
Variation of the observer position for the luminaire distance S											
S = 1.0H		+1.5 / -2.1					+0.6 / -0.6				
S = 1.5H		+2.5 / -3.6					+2.7 / -3.4				
S = 2.0H		+3.2 / -4.9					+2.9 / -5.7				
Standard table		BK02					BK02				
Correction summand		5.2					8.4				
Corrected glare indices referring to 3981lm total luminous flux											

Sample Pictures